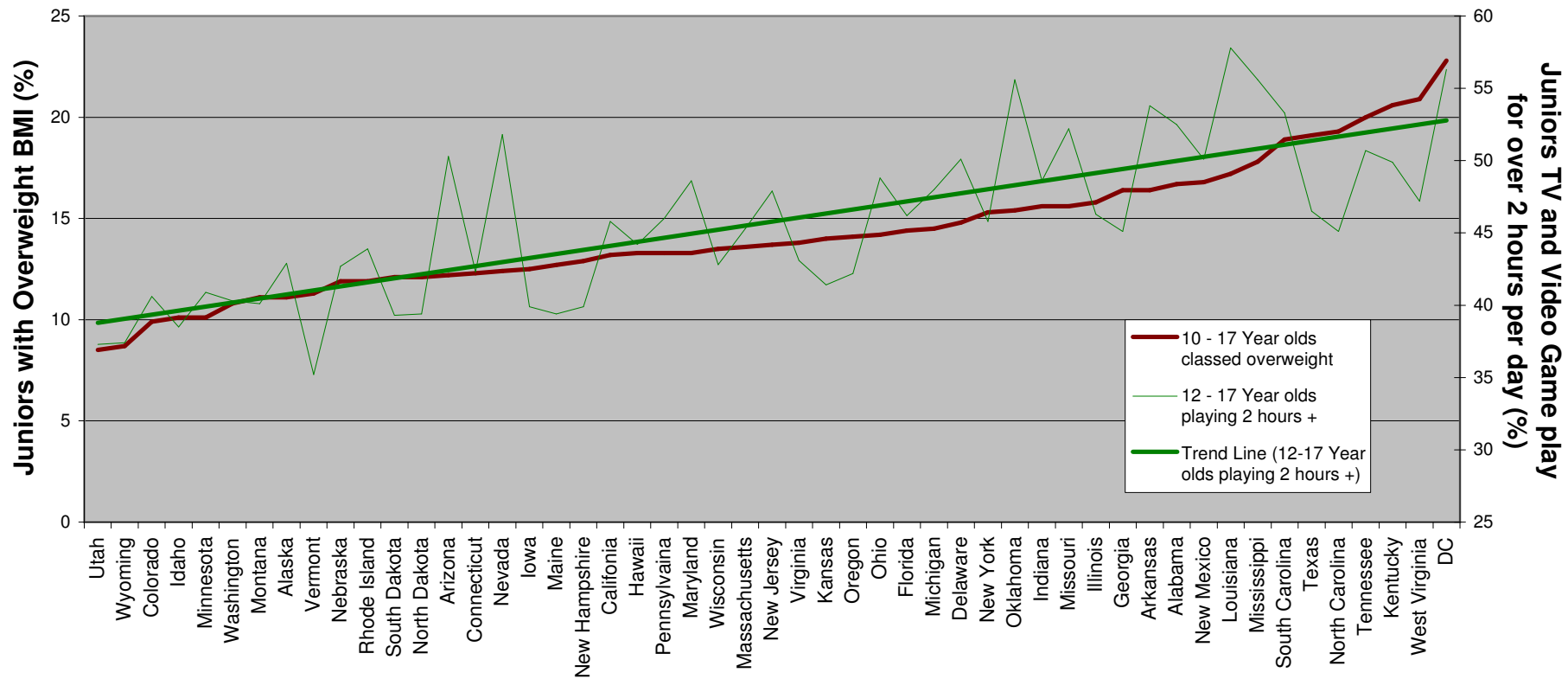


Correlation between TV and Video Game play and percentage overweight juniors per US State



Source:

Child and Adolescent Health Measurement Initiative (2005). National Survey of Children's Health, Data Resource Center on Child and Adolescent Health website. Retrieved 08/27/07 from www.nschdata.org

Data table

State	2-3 Hours per day	4+ Hours per day	12 - 17 Year olds playing 2 hours +	10 - 17 Year olds classed overweight
Utah	33.8	3.5	37.3	8.5
Wyoming	32.1	5.3	37.4	8.7
Colorado	34.6	6	40.6	9.9
Idaho	31.9	6.6	38.5	10.1
Minnesota	37.3	3.6	40.9	10.1
Washington	33	7.3	40.3	10.8
Montana	35.2	4.9	40.1	11.1
Alaska	34.6	8.3	42.9	11.1
Vermont	30	5.2	35.2	11.3
Nebraska	36.3	6.4	42.7	11.9
Rhode Island	35.3	8.6	43.9	11.9
South Dakota	33.7	5.6	39.3	12.1
North Dakota	33.5	5.9	39.4	12.1
Arizona	39.4	10.9	50.3	12.2
Connecticut	34.9	7.4	42.3	12.3
Nevada	42.5	9.3	51.8	12.4
Iowa	35.2	4.7	39.9	12.5
Maine	33.5	5.9	39.4	12.7
New Hampshire	33.8	6.1	39.9	12.9
California	37.4	8.4	45.8	13.2
Hawaii	34.9	9.3	44.2	13.3
Pennsylvania	36.9	9.1	46	13.3
Maryland	38.3	10.3	48.6	13.3
Wisconsin	37.4	5.4	42.8	13.5
Massachusetts	35.6	9.7	45.3	13.6
New Jersey	38.9	9	47.9	13.7
Virginia	35.5	7.6	43.1	13.8
Kansas	36.2	5.2	41.4	14
Oregon	35.9	6.3	42.2	14.1
Ohio	38.3	10.5	48.8	14.2
Florida	36.2	10	46.2	14.4
Michigan	38.2	9.8	48	14.5
Delaware	41.3	8.8	50.1	14.8
New York	38.1	7.7	45.8	15.3
Oklahoma	42.9	12.7	55.6	15.4
Indiana	38.6	10	48.6	15.6
Missouri	42	10.2	52.2	15.6
Illinois	36.6	9.7	46.3	15.8
Georgia	36.1	9	45.1	16.4
Arkansas	42.8	11	53.8	16.4
Alabama	41.3	11.2	52.5	16.7
New Mexico	43	7.1	50.1	16.8
Louisiana	42.9	14.9	57.8	17.2
Mississippi	43.5	12.1	55.6	17.8
South Carolina	44.2	9.1	53.3	18.9
Texas	35.5	11	46.5	19.1
North Carolina	33.7	11.4	45.1	19.3
Tennessee	41.3	9.4	50.7	20
Kentucky	40.5	9.4	49.9	20.6
West Virginia	38.7	8.5	47.2	20.9
DC	37.3	19	56.3	22.8

Source:

Child and Adolescent Health Measurement Initiative (2005). National Survey of Children's Health, Data Resource Center on Child and Adolescent Health website. Retrieved 08/27/07 from www.nschdata.org