

MEET NORTHPORT TRANSLATOR

Say 'Hello' to the only user controlled interactive import utility for Abila MIP Fund Accounting! We've listened to users and recognized the need for an intuitive application to import data into Abila MIP Fund Accounting. While this functionality has been available in some form for 30 years; it hasn't been easy to use without an IT background, or assistance from either your Business Partner or Abila. Now the days of needing help are over!

MORE TIME FOR YOUR MISSION

NorthPort Translator is the only end user integration tool that allows organizations to import any standard Excel or CSV file with columnar data into Abila MIP Fund Accounting.

The definition file is always the question! What is a definition file? How do I update the definition file? What do those commas mean? What if I miss one? As a member of the Abila community for over a decade, we have also struggled at times. Miss a comma and the import fails. Now the import process can be done in minutes, saving you time and stress.

We expect integration in 2014, and we are delivering on that expectation. Specialized systems to manage data tracking are what solution providers are bringing to market. Organizations expect these systems to work seamlessly together without paying thousands of dollars every time there are changes. In the past there was no other option, now you have NorthPort Translator. Import your data, and get on with your organizations' mission.

WE SAW A NEED

Customers currently have 3 options for understanding and getting definition files written:

Continue to manually enter your data and waste time, money, risk mistakes, reduce analysis time, and continue to be inefficient

Contact your Business Partner or Abila Professional Services Group to assist with each definition

file setup and pay again with every change

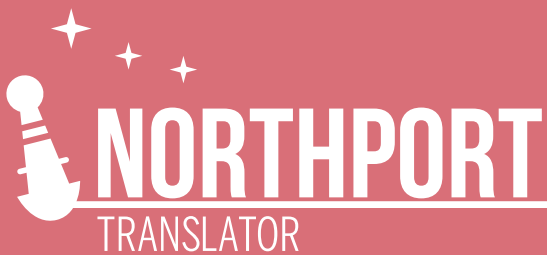
Try to learn the process and understand something that is not typical information or knowledge for accountants by reading the manual or receiving training that will evaporate over time

The team at True North Endeavors has been talking with customers, performing usability studies, and ensuring that any level of user who understands how to make an entry and can identify what information they need to get a transaction into the system can use NorthPort. Now you can eliminate the need to continue keying information by utilizing NorthPort Translator to get the data in the system.

This tool has been a long time coming. Our Abila MIP Business Partner Community has spent hours, days, and years manually establishing definition files for customers as a one off solution. No more! NorthPort Translator empowers you, the customer and end user of MIP Fund Accounting, to control the process. When changes happen in the file, you control it. When you get one massive adjustment in Excel it can be now be imported versus being manually keyed in. As a team we have developed hundreds of unique import integration points for our clients, but no more. Now you are empowered to handle your own files. What a time saver!

IT COULDN'T BE EASIER

NorthPort Translator allows you to control the import process from start to finish. If you can add a new account to the Chart of Accounts in Abila MIP, you can use NorthPort Translator. The import process takes you through a wizard similar to the Chart of Accounts Setup Wizard. Answer a few simple questions about your file, and at the end the file will be validated and ready for import into Abila MIP Fund Accounting. No need to contact your Business Partner or Abila for assistance, and no need for cost to play a factor to your organizations' efficiency; this tool will pay for itself with the first import!



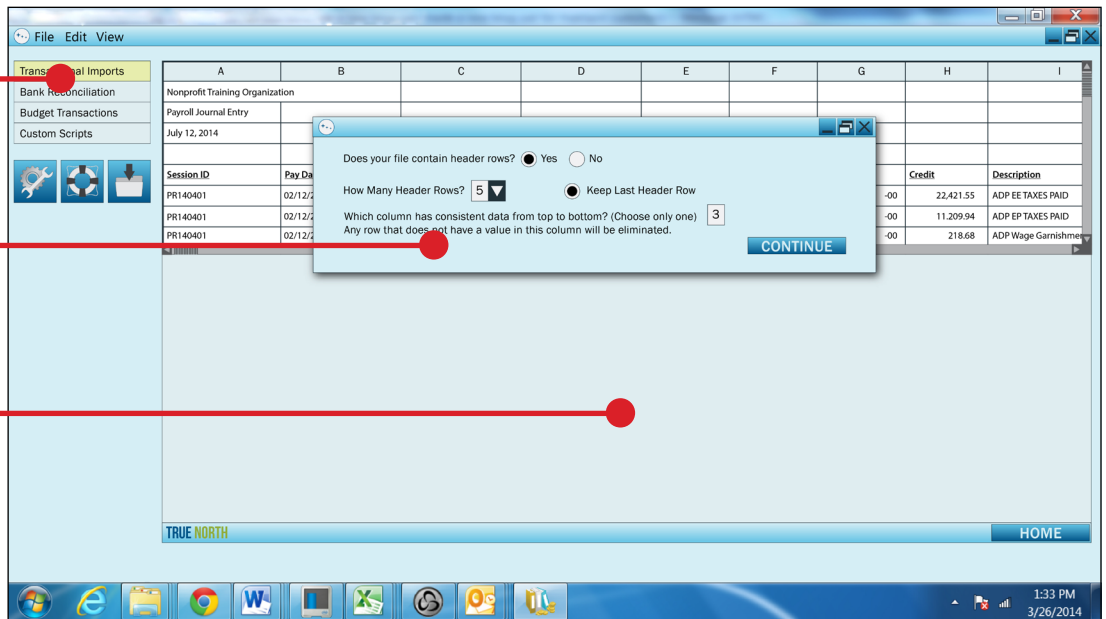
SELECTED FEATURES

Screen look & feel makes setup intuitive

Options for cleaning the file to eliminate unneeded data rows

The functions are new, but the workspace is familiar

Works with both Excel & CSV files



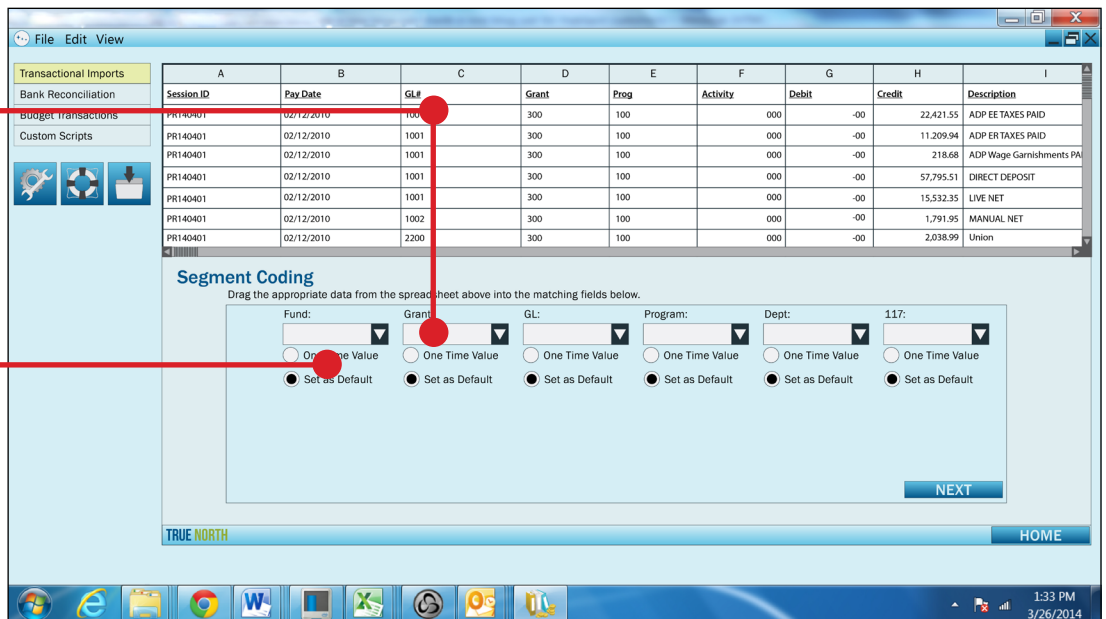
Drag & Drop functionality streamlines process

Data validation against database requirements

Ability for defaults and one time values

Validation of balancing or offset account assignment use

Mapping errors can be corrected before importing



THERE'S EVEN MORE TO BE EXCITED ABOUT

The functionality out of the box is robust, and there are even more features planned for future releases including:

- Expansion of Transaction Types
- Support of User Defined Fields
- Support for Distribution Codes
- Conversion of strings to segments
- Auto Reversal in Journal Vouchers
- Budget Transactions (3 File Layout Methods)
- Cleared Check Import
- Updated Entry Dates

