

# ***LEDSINO*** ***LED POSTER MANUAL***



**Shenzhen LEDSINO Optoelectronic Co.,Ltd.**

Building C, Tangtou First Industrial Zone, Shiyan

Bao'an District, Shenzhen, Guangdong, China

**Zip code:** 518108

**Tel:** +86-755-33075195

**MOB:**+86-13421345624

**E-mail:** [manager@ledsino.com](mailto:manager@ledsino.com)

## **Content**

### **Chapter 1 product introduction**

- 1.1 Hardware
- 1.2 Product accessories
- 1.3 Operation environment
- 1.4 Principle and application
- 1.5 Installation

### **Chapter 2 Parameter and structure**

- 2.1 composition of machine
- 2.2 LED module
- 2.3 Power supply
- 2.4 Receiving card
- 2.5 Machine drawing

### **Chapter 3 Change for disabled component**

- 3.1 Change module
- 3.2 Change sending card and power supply
- 3.3 Change receiving card
- 3.4 Change HUB

### **Chapter 4 Attention**

## Chapter 1 Product introduction

### §1.1 Hardware

1.1.1 A series advertising machine

1.1.2 Stand base/hanging structure

1.1.3 1PC(for synchronous control use, with software, with HDMI out port for graphic card)

1.1.4 mobile phone/ipad(asynchronous control use, download APP software)

Remark: can switch between synchronous and asynchronous, can select synchronous or asynchronous

### § 1.2 component of product

	item	A2.5 poster
Spare part	power cable	Standard 1.5m power cable
	Stand base	For stand use on the floor
	Hanging bar	For hanging the machine
technology	Control system	Nova
	Module design	Led and ic driver all in one
	Panel design	Patented design
	Calibration	Brightness and color calibration

### §1.3 Operation environment

1.3.1 working temperature : 0 - +40℃ ;

1.3.2 Humidity: 0 - 70%RH, no freezing;

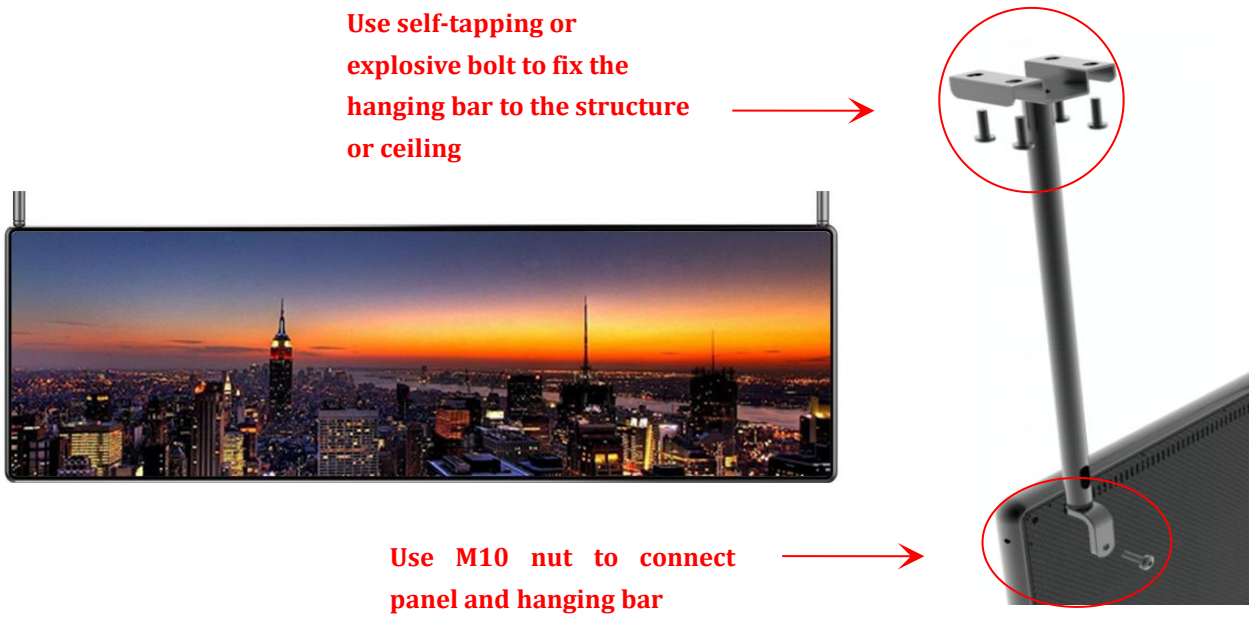
### §1.4 Principle and application environment

1.4.1 Principle: to control brightness and color of the LED lamp by sending card, receiving card and control software, realize different photos and video playing

1.4.2 Application environment: Supermarket, stage, entrance of the metro and airport, and so on.

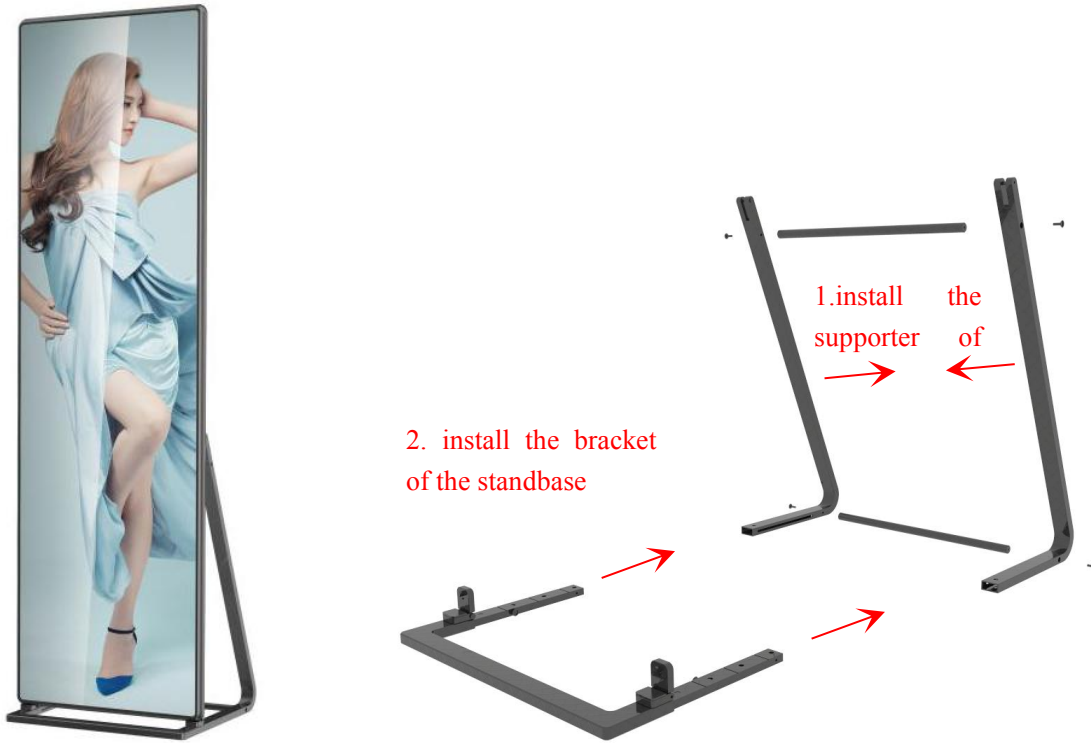
## §1.5 Installation

### 1.5.1 Hanging

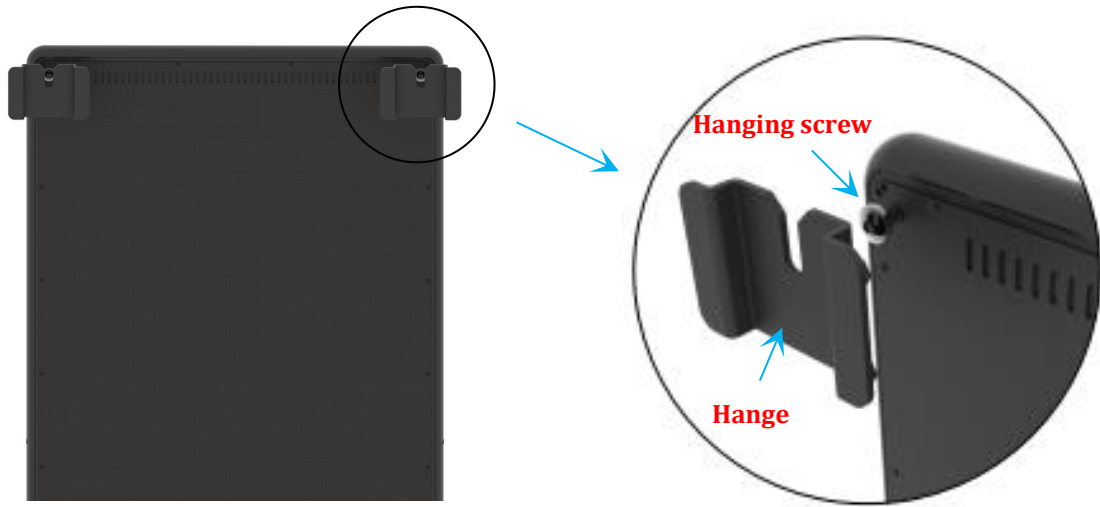


**Vertical/horizontal hanging**

### 1.5.2 Standing



### 1.5.3 Mounting installation



**Based on the real environment to mount it on the wall, and then attach the panle with hanging screw on the hanger**



**Creative installation mode**

## Chapter 2 Parameters and structure

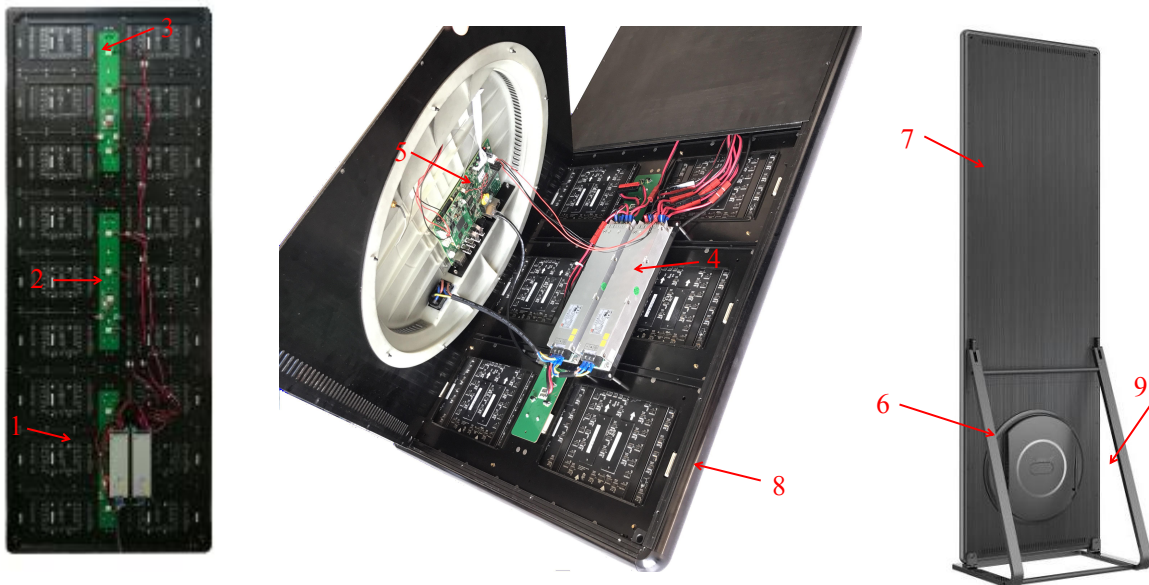
### §2.1 A Panel and parameters

Composition of panel: 18pcs LED modules, 3pcs receiving card, 2pcs 400W power supply, 1pc sending card, 3pcs HUB. Panel structure, plastic back cover, Aluminum back cover, acrylic front cover

Composition of module: LED lamp, PCB board, ic driver, connectors, shell, HUB

#### 2.1.1 Panel composition

NO.	Item	QTY(PCS)
1	LED module	18
2	Receiving card	3
3	HUB	3
4	Power supply	2
5	Sending card	1
6	Power box	1
7	Panel back cover	1
8	Panel structure	1
9	Stand base	1



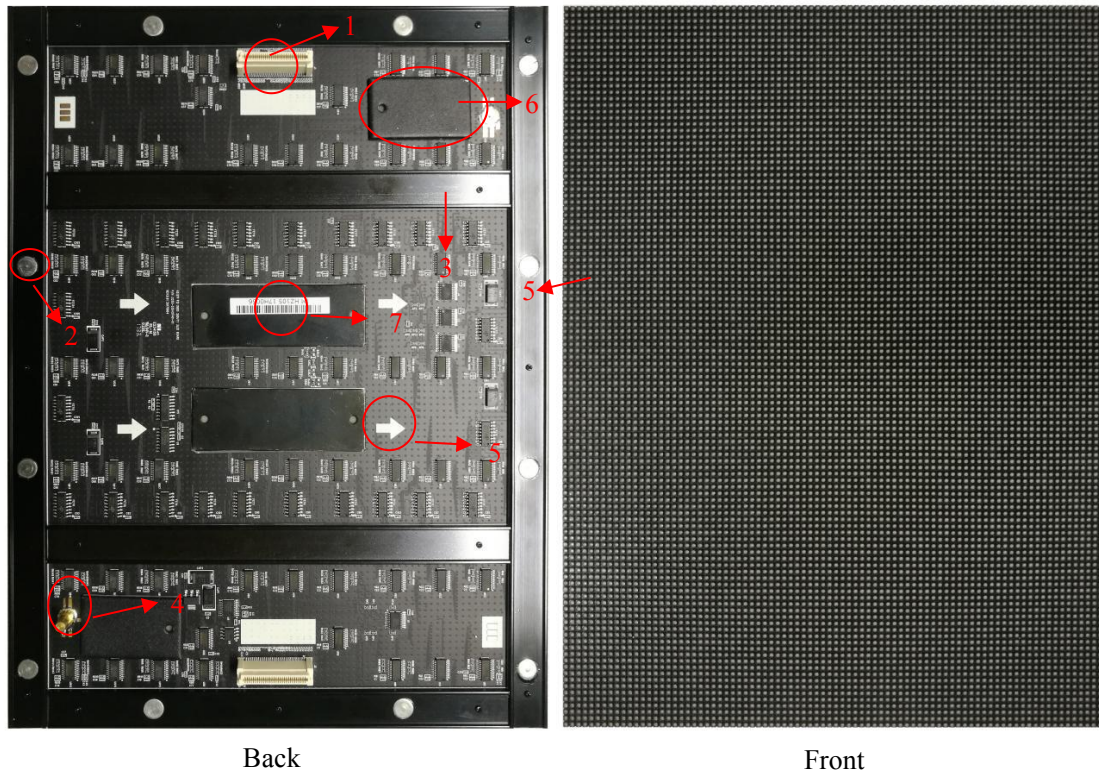
## 2.1.2 Parameter

LED encapsulation	SMD 2020	Pixel configuration	1R1G1B
Pixel pitch	2.571mm	Brightness	1000nits
Density	151284pixels /m <sup>2</sup>	Weight	35kg/pc (without stand)
Panel size	614*1982*40 mm	Panel material	Brushed aluminum +metal plate
Resolution	224*756 dots	IP	IP30(front/rear)
LED module size	288*216mm	Viewing angle	H: 140°/V:140°
Display area	1.12 m <sup>2</sup>	Contrast ratio	4000:1
Scan mode	1/28 scan	Brightness control	256levels
IC driver	2053	Storage temperature	-20℃- +60℃/0- 80%RH
Working temperature	0℃- +40℃/0-70%RH	Frequency	50Hz/60Hz
Refresh rate	2880	Processing	14bit
Display size	576*1944	Gray scale	16384 levels per color
Color	4.4trillion	Life time	100,000 Hours
Power consumption	350W/122W	Input voltage	110~220V
Installation mode	hanging/stand	Maintenance	Front and back
Control system	Asynchronous/synchronous	Input power frequency	50-60Hz
Control card	Nova T3	Control mode	Internet/WIFI/4G
Stand angle	0~15°		



## §2.2 Module composition and parameter

### 2.2.1 Composition of module



1.data power port; 2.magnet of module; 3.structure of shell; 4.positioning pole; 5.direction  
6. front maintenance iron; 7.module code; 8.LED lamp

### 2.2.2 Module parameter

A2.57 module parameter		
NO.	Item	Parameter
1	Model	A2.57
2	Pitch	2.571mm
3	Density	151284
4	Size	288*216mm
5	LED encapsulation	SDM 2020
6	Horizontal viewing angle	140
7	Vertical viewing angle	140
8	Resolution	112*84

### 2.2.3 Module troubleshooting and repairing

Analysis: all black, white, flicker, scratch and many leds failure appears, then need to repair the module.

Steps: 1. Turn off power supply, take off front cover, 2. Take off the disabled module by tool, 3. Change the new module.

Attention: wear anti-static glove when operation

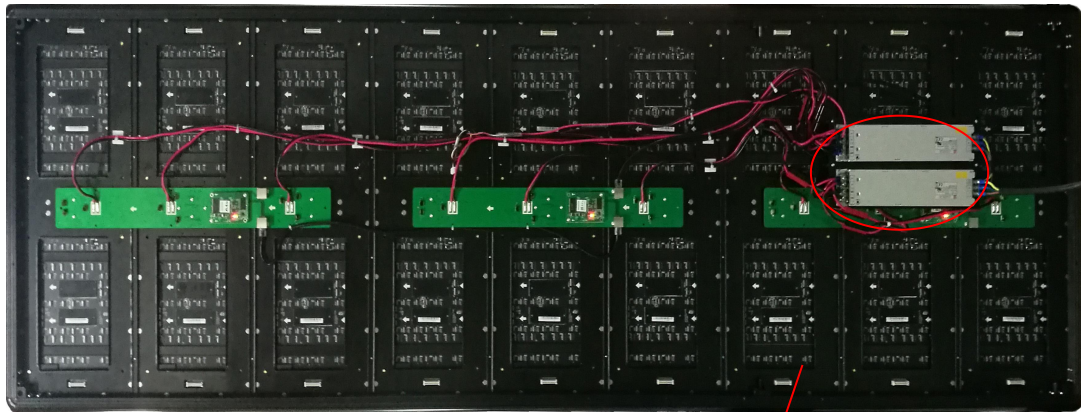
### §2.3 Power supply

Turn off power, then maintain it

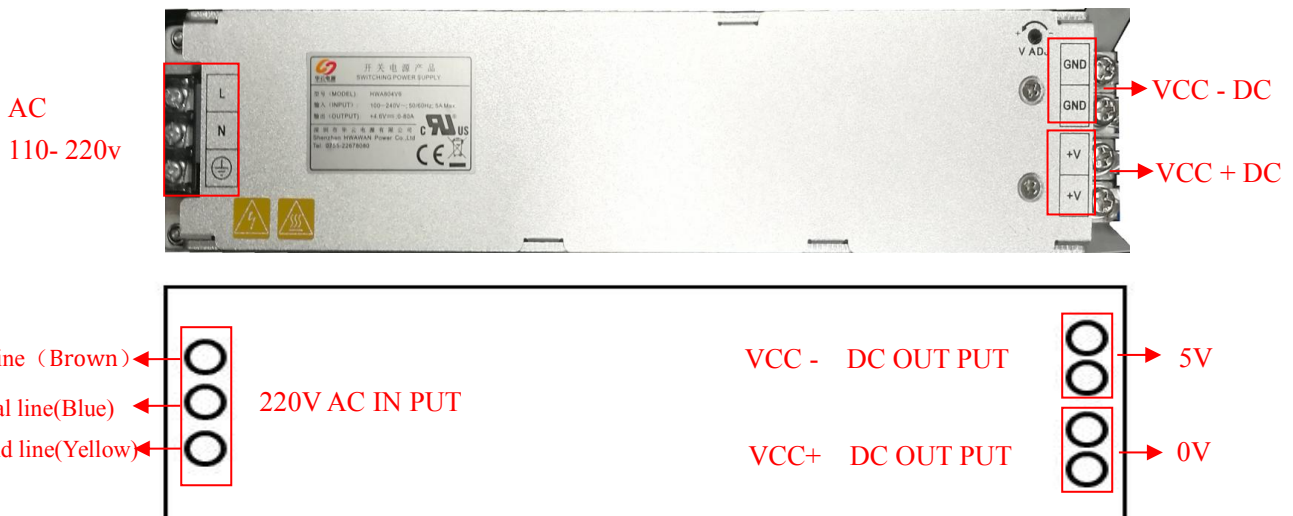
Attention: don't mix the position of live line, neutral line and ground line

Analysis:

When judge whether there is power output or not, should use the AVO meter( or other test tool), same time should check whether there is flash or last lighting of the indicator of the power supply



Internal



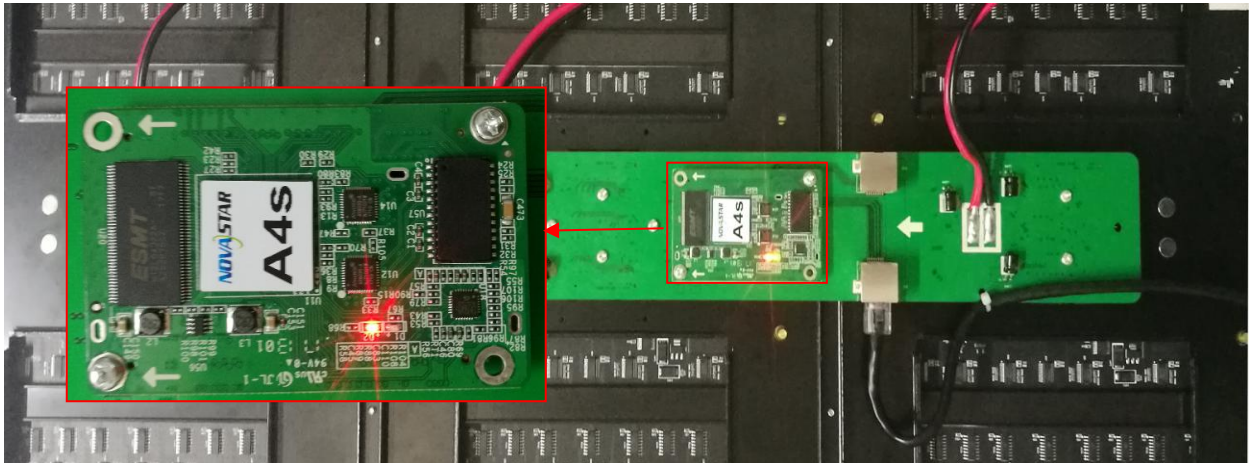
## §2.4 Receiving card

### Analysis:

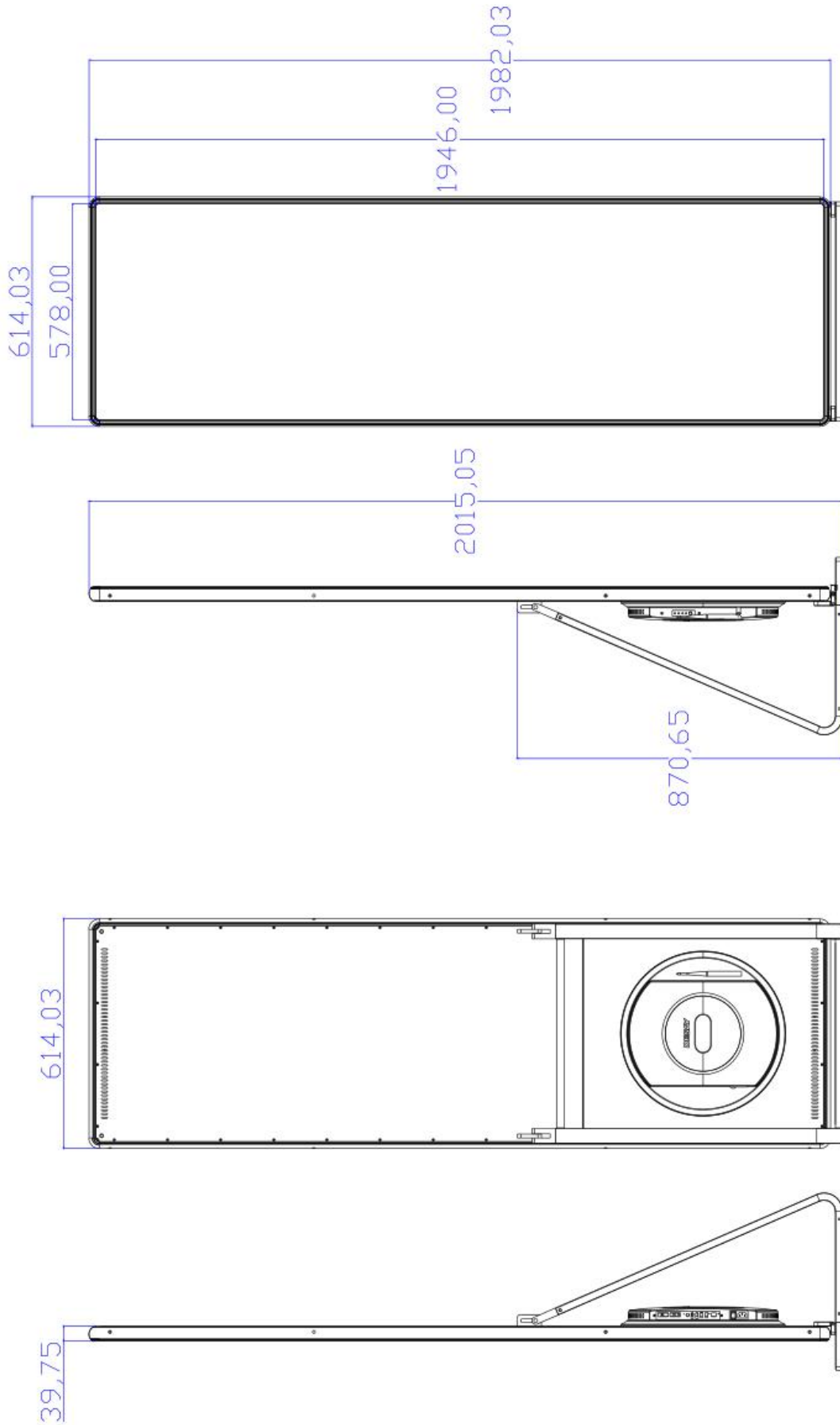
When there is signal and working normally, the indicator of the receiving card will be flash normally, if there is disabling or no signal input, there will be abnormal flash, last lighting or not lighting of the indicator

Attention: the power should be turned off when replace or maintain the receiving card. After changing the new receiving card, should upload the data of the machine(the machine is connected with the computer by internet cable, open the software to read the data of the module, then upload the data to the receiving card).

Please keep clean of the slot of receiving card and HUB when install or tear down the receiving card. After installation, please check whether there is loosening or other problem, then fixed by screw.



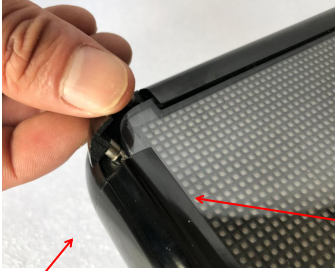
§2.5 Panel diagram



## Chapter 3. Change for disabled component

### §3.1 Change LED module

**1. Tear down the angle-pressing block from any corner of the machine**



**2. Tear down the aluminum bar**



**3. Take away the a front cover**



**4. Take off the module by the magnetic tool**



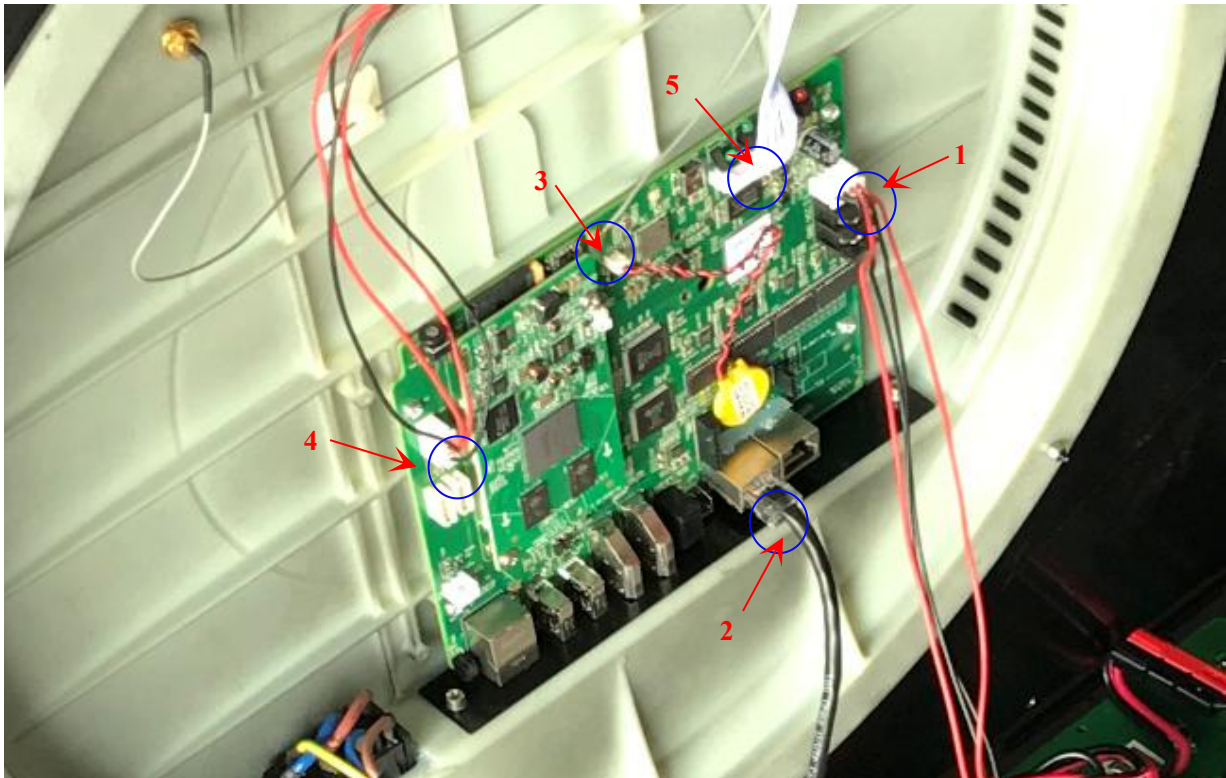


### §3.2 Change sending card and power supply

1. Use the cross type screw driver to loosen the screw of the power box cover

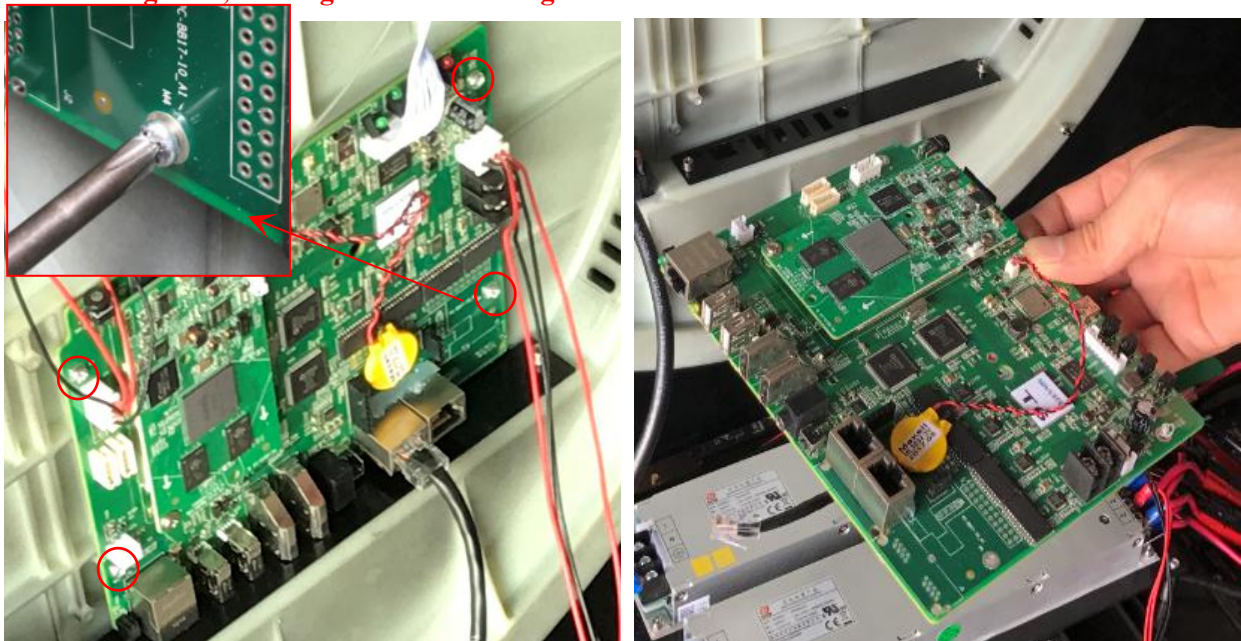


**2. Pull up the cables of the receiving card(remember the position and order of the cables)**



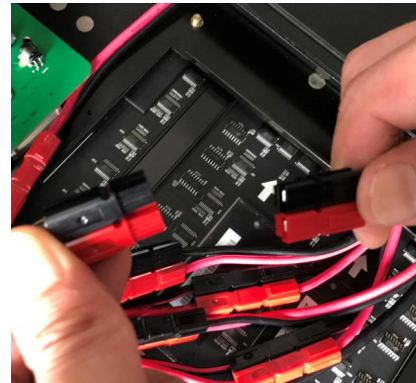
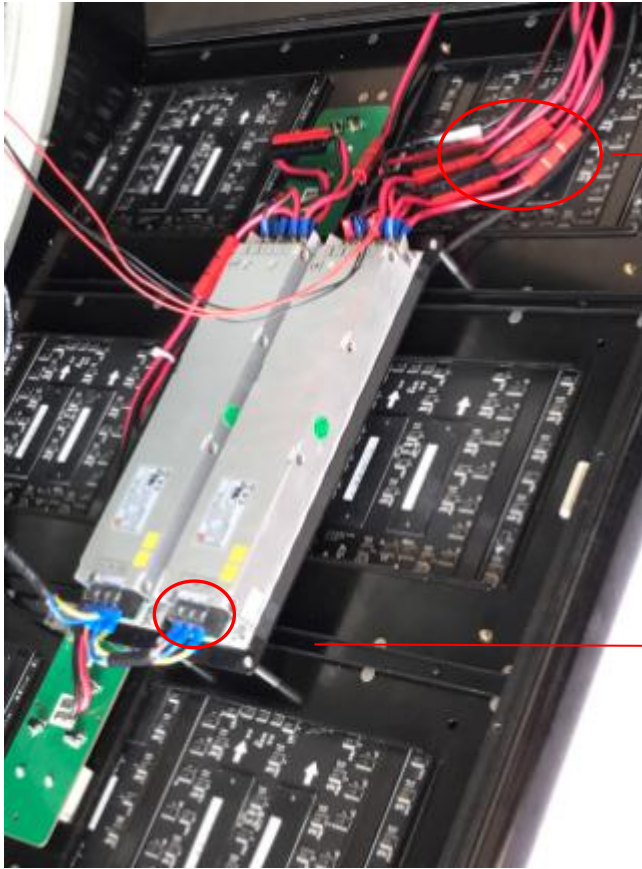
- 1. Power cable
- 2.output internet cable
- 3. WIFI cable
- 4. Synchronous/asynchronous switcher cable
- 5. indicator

**3. Tear down the screw and take off the old sending card, change the new sending card**





**4. Tear down the AC line and DC line of the power supply**



**Quick plug in/off port**



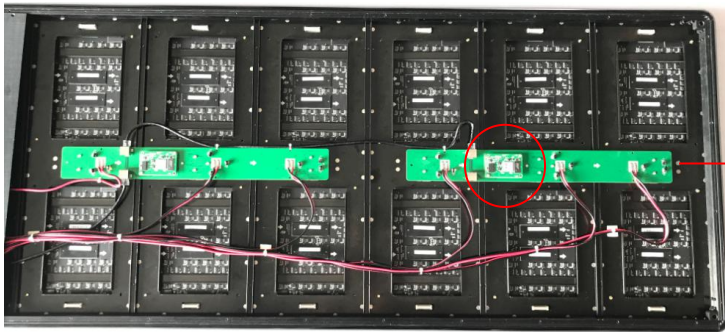
**Cross type screw driver**

**5 Use M3 socket wrench to tear off the screw of the power supply and change the new power supply**



### §3.3 Change receiving card

**1. Tear down the back cover with same position the disabled receiving card**



**2. Change the new receiving card and put back the led module**

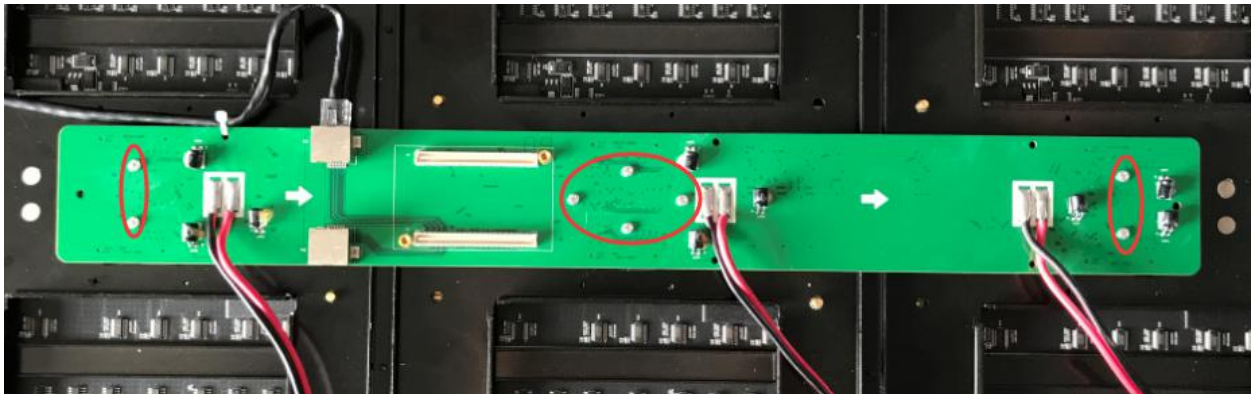


### §3.4 Change HUB

**1. Tear down the back cover with same position of the disabled HUB**



**2. Tear down internet cable, power cable, tear down the 8pcs screws on the HUB and change the new one**



## Chapter 4. Attention

### 1.Attention for synchronous operation

By the Synchronous/asynchronous system switcher to realize Synchronous/asynchronous switch

When the indicator is on, it is the synchronous state, connect to the HDMI cable and it will display the content from the control computer.



### 1. Attention of asynchronous operation

Make sure the indicator is off from the Synchronous/asynchronous system switcher, otherwise there will be no content display in the screen or display abnormally

2. After tear down or change the card, there will be no abnormal display for the machine, then need to send the diagram by computer and mobile phone, after sending the diagram, if the display is still abnormal, change to port 2 to send the diagram from the software is OK

Screen name	<input type="text" value="Taurus-50000348"/>		
Address	<input type="text" value="Please input screen address"/>		
Port number	<input type="text" value="1"/>		
Receiving card size	Width <input type="text" value="48"/> PX	Height	<input type="text" value="48"/> PX
Receiving-Card number	Column <input type="text" value="2"/> 96PX	Row	<input type="text" value="1"/> 48P X